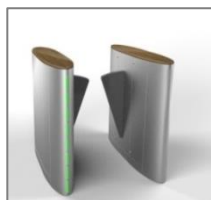




For rapid separation of persons

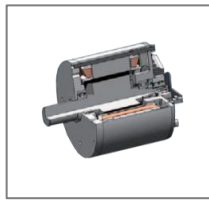
For access control, steering visitors, and passage into secured areas – MPR retractable gates are the ideal solution for the rapid separation of persons when low-to-medium security is required. Variants with enlarged passage widths also make the MPR suitable for wheelchairs, prams, and the transport of materials. The variety of modules allows rapid adaptation to spatial conditions, user numbers and many other requirements. Passage takes place without contact.

Photoelectric switches detect users and open the wings before they come into contact with them. The barriers close automatically after passage. The aisle is blocked by means of a retractable triangular wing made of an aluminium core construction covered by PU-foam to ensure safety to pedestrians. An option of acrylic glass wing is also available. Two different models allow two different passage widths (520mm and 960 - 990mm).



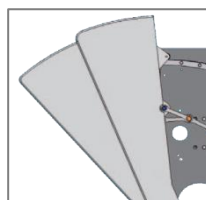
Housing and quality

The housing made of stainless steel is separated into three segments. The locked middle segment contains the controller and the drive unit. Access control devices can be installed on top of the fascia panel located at each end segment.



Motor and control unit

The MHTM™ motor with sensor technique offers almost silent operation. The motor allows a direct drive of the rotating centre without additional gearing. It operates under constant power and thus prolongs the motor life.



Wing types

The standard wing for the MPR series is made of an aluminium core construction covered with PU-foam. Alternatively, acrylic wings may also be used (for passage widths of 520mm only).



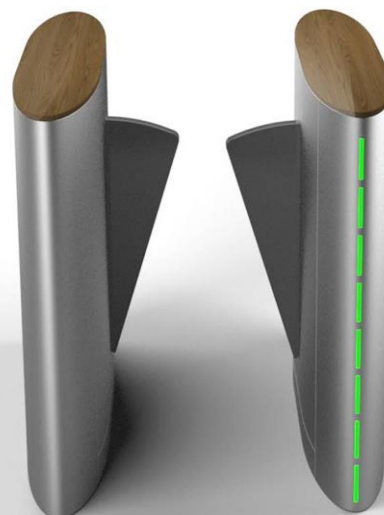
Safety

Persons passing the gate are monitored by eight photocells. They detect the direction and prevent closure as long as a person is within the safety zone. The gate closes automatically when the lane is cleared.

MPR

Retractable gates

- Short opening times of 0.3 seconds for a high through flow frequency
- Comfortable non-contact passage
- Space-saving installation of multiple applications
- Simple integration of all common access control systems
- Automatic opening if power fails
- Wide variants suitable for wheelchairs, prams, and material transport
- Designed for 10 million opening and closing actions



Technical data	MPR 112 (250)	MPR 112 (280)
Voltage	115 - 240 V AC	115 - 240 V AC
Frequency	50 - 60 Hz	50 - 60 Hz
Power consumption max.	35 W	117 W
Duty cycle	100%	100%
Passage width	520 mm	960 - 990 mm *
Housing dimensions (WxLxH)	250 x 1300 x 1002 mm	280 x 1300 x 1002 mm
Drive unit	MHTM™	MHTM™
Opening / closing times (acryl wing)	0.35 s	-
Opening / closing times (soft wing)	0.3 s	0.6 s
Protection class	IP 32	IP 32
Temperature range	0 to +45 °C	0 to +45 °C

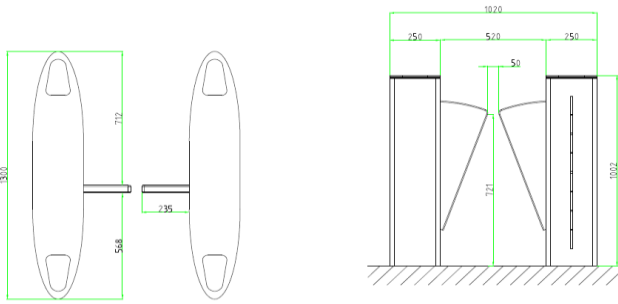
Options	Potential applications
Materials	Chrome-plated steel, stainless steel V2A
Barrier elements	Fireproof PU foam, acrylic glass (Only for STD width)
Attachments	Customer specific access control systems



Dimensional drawings

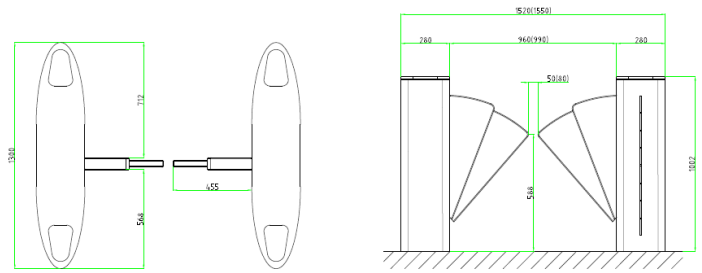
MPR 112-e series standard lane

With 520mm passage width



MPR 112-e series wide lane

With 960-990mm passage width

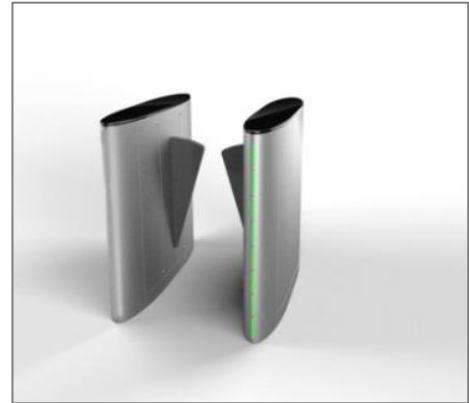


Customization options

High gloss glass top

The MPR eSeries is aesthetically designed in an Elliptical shape Stainless Steel housing. The design basis incorporates a Light indicator running from top to bottom indicates the status of the lane.

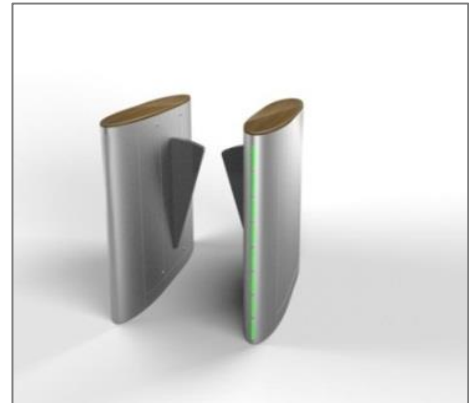
The top cover of the MPR eSeries matches with the housing design and is customizable with different colors of toughened glass to blend the unit with the architecture and design of the lobby. An option of Laminated glass will also be available.



Wooden top

The MPR eSeries is aesthetically designed in an Elliptical shape Stainless Steel housing. The design basis incorporates a Light indicator running from top to bottom indicates the status of the lane.

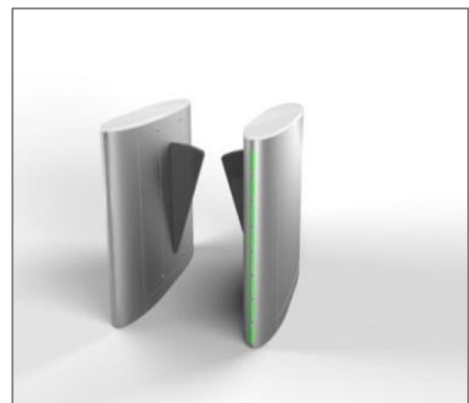
The top cover of the MPR eSeries matches with the housing design and is customizable with different veneer types of wood to blend the unit with the architecture and design of the lobby. An option to have gloss coating is also available.



Corian top

The MPR eSeries is aesthetically designed in an Elliptical shape Stainless Steel housing. The design basis incorporates a Light indicator running from top to bottom indicates the status of the lane.

The top cover of the MPR eSeries matches with the housing design and is customizable with different colors of Corian / Acrylic material to blend the unit with the architecture and design of the lobby. Option to have engineered marble or Granite will also be available.



Access to Progress

Magnetic stands for pioneering products – in every way. Our access control systems for vehicles or pedestrians clear the way for thousands of people every day – at car parks, toll gates, stations, airports and in buildings. Our technology is also pioneering, however: with innovative drives, intelligent control systems and well thought-out details it provides maximum safety and longevity. Are you also on the path to Magnetic?



Vehicle barriers

Access
Parking
Toll barriers
Special barriers



Pedestrian gates

Turnstiles
Swing gates
Tripod gates
Retractable gates
Wing gates



Terminals

Cars
Trucks

Germany

MAGNETIC AUTOCONTROL GMBH
Grienmatt
20 79650 Schopfheim
Phone +49 7622 695-5
Fax +49 7622 695-800
info@magnetic-germany.com

Australia

MAGNETIC AUTOMATION PTY LTD
38 Metrolink Circuit
Campbellfield,
VIC 3061
Phone +61 3 9339 2900
info@magnetic-oz.com

Brazil

MAGNETIC AUTOCONTROL LTDA
Av. Salim Antônio Curiati, 136
04690-050 – São Paulo
Phone +55 11 5660 8500
info@magnetic-br.com

China

MAGNETIC CONTROL SYSTEMS CO., LTD
No. 3 Building, No. 51
Lane 1159, Kang Qiao (East) Road
Kang Qiao Industrial Zone, Shanghai
Phone +86 21 68182970
info@magnetic-cn.com

France

FAAC FRANCE
377 Rue Ferdinand Perrier
69808 St Priest Cedex
Phone +33 4 72 21 86 89
info@magnetic-fr.com

India

MAGNETIC AUTOCONTROL PVT LTD.
PRS Centre Plot No. 373 to 376,
2nd Floor (West Wing)
1st Cross Street, Nehru Nagar
Old Mahabalipuram Road
Kottivakkam (Opp Rayala
Technopark, Perungudi)
Chennai 600041
Phone +91 44 421 23297; +91 44 421
23017
info@magnetic-india.com

Middle East

FAAC MIDDLE EAST FZE
Dubai Silicon Oasis
PO Box 54886
Dubai
United Arab Emirates
Phone +971 4 3724193
info@magnetic-uae.com

N. and S. America (excl. Brazil)

FAAC INTERNATIONAL, INC
3160 Murrell Road
Rockledge, FL 32955
USA
Phone +1 321 635 8585
info@magnetic-usa.com

Scandinavia

FAAC NORDIC AB
Box 125
284 22 Perstorp
Sweden
Phone +46 435 77 95 03
info@magnetic-nordic.com

Southeast Asia

MAGNETIC CONTROL SYSTEMS SDN. BHD
No. 17, Jalan Anggerik Mokara 31/54
Taman Perindustrian Kota Kemuning
40460 Shah Alam
Selangor Darul Ehsan
Malaysia
Phone +60 3 5123 0033
info@magnetic-malaysia.com